



BCA AWARDS 2018

Recognising Excellence in the Built Environment





BCA CONSTRUCTION EXCELLENCE AWARD



The Award

The BCA Construction Excellence Award was introduced in 1986 and is now into its 32nd year of competition. To date, BCA has conferred 297 Awards and 254 Certificate of Merit (1986 – 2017). Invitations for nominations for the 2018 Awards were made in August 2017 to architectural and engineering consultancy firms, government departments, statutory boards as well as construction firms. Out of the 48 nominated projects, 47 were shortlisted for evaluation. In the end, a total of 19 Awards and 17 Certificates of Merits were conferred for 2018.

The Recipients

Builders are the principal recipients of the Award. Developers and consultants (Architects, Structural Engineers, M&E Engineers and Quantity Surveyors) who were involved in the project will also be acknowledged.



BCA CONSTRUCTION EXCELLENCE AWARD

Award Categories

There are 7 award categories as follows:

1. Commercial/Mixed Development Buildings
2. Industrial Buildings
3. Institutional Buildings
4. Residential Buildings (\$1800/m² and Above)
5. Residential Buildings (Below \$1800/m²)
6. Small Buildings - \$3 million to \$10 million
7. Civil Engineering Projects

Assessment Criteria

Projects were assessed by the Assessment Committee in 3 stages: -

- a. Builders' presentation on the construction process;
- b. Site visits; and
- c. A committee meeting to deliberate the results.

The assessment of the nominations is based on the following criteria:

- a. Builder's overall management of the project;
- b. Builder's technical capability and innovations; and
- c. Quality of the completed project.

BCA CONSTRUCTION EXCELLENCE AWARD

Assessment Committee

Chairman

Mr Lai Huen Poh
BCA Board Member
Senior Managing Director
RSP Architects Planners & Engineers (Pte) Ltd

Deputy Chairman

Mr Ang Wee Gee
BCA Board Member

Members

Mr Anthony Chia
Er Chan Ewe Jin
Er Dr Johnny Wong Liang Heng
Mr Jon Skipworth-Button
Er Kaliannan Thanabal
Ms Leong-Kok Su-Ming
Mrs Ong-Koh Wee Nah
Professor Richard Liew
Mr Sin Lye Chong
Mr Steven Low Kong Yen
Er Tan Kiat Leong
Mr Tanaka Hiroyuki
Mr Tan Soon Kian

Yanlord Land Group Limited
ECAS Consultants Pte Ltd
Housing & Development Board
Scott Vicker Environmental Pte Ltd
Building And Construction Authority
Building And Construction Authority
Land Transport Authority
National University of Singapore
Urban Redevelopment Authority
ONG&ONG Pte Ltd
TW International Counsel Pte Ltd
Kajima Overseas Asia Pte Ltd
Unison Construction Pte Ltd

ASCOTT ORCHARD SINGAPORE

Commercial/Mixed Development Buildings Category

BCA CONSTRUCTION EXCELLENCE AWARD | AWARD



Builder	Woh Hup (Private) Limited
Developer	Capitaland Limited
Principal Consultant	RSP Architects Planners & Engineers (Pte) Ltd
Architectural Consultant	RSP Architects Planners & Engineers (Pte) Ltd
Structural Consultant	AECOM Singapore Pte. Ltd.
M&E Consultant	Beca Carter Hollings & Ferner (S.E. Asia) Pte Ltd
Quantity Surveyor	Arcadis Singapore Pte Ltd
Landscape Consultant	COEN Design International Pte Ltd
Construction Cost	S\$102.5 million
Construction Period	38.0 months
Gross Floor Area	18,978 m ²

KATONG SQUARE

Commercial/Mixed Development Buildings Category

BCA CONSTRUCTION EXCELLENCE AWARD | AWARD



Builder	Master Contract Services Pte Ltd
Developer	Katong Holdings Pte Ltd
Principal Consultant	ONG&ONG Pte Ltd
Architectural Consultant	ONG&ONG Pte Ltd
Structural Consultant	TW-Asia Consultants Pte Ltd
M&E Consultant	United Project Consultants Pte Ltd
Quantity Surveyor	Davis Langdon KPK, an AECOM Company
Signage Consultant	Design Objectives Pte Ltd
Interior Designer and Landscape Consultant	Eco-id Design Pte Ltd
Construction Cost	S\$140.8 million
Construction Period	20.0 months
Gross Floor Area	25,210 m ²

ICPH2@KB (GREYFORM BUILDING)

Industrial Buildings Category

BCA CONSTRUCTION EXCELLENCE AWARD | AWARD

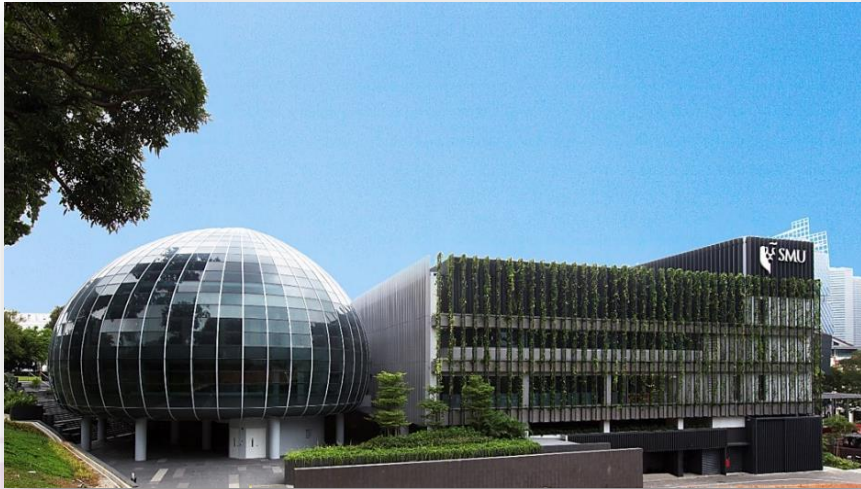


Builder	Straits Construction Singapore Pte Ltd
Developer	Straits Construction Singapore Pte Ltd
Principal Consultant	ONG&ONG Pte Ltd
Architectural Consultant	ONG&ONG Pte Ltd
Structural Consultant	BC Koh & Partners LLP
M&E Consultant	Rankine & Hill (S) Pte Ltd
Quantity Surveyor	Straits Construction Singapore Pte Ltd
Construction Cost	S\$106.0 million
Construction Period	30.0 months
Gross Floor Area	32,081 m ²

SINGAPORE MANAGEMENT UNIVERSITY - SCHOOL OF LAW BUILDING

Institutional Buildings Category

BCA CONSTRUCTION EXCELLENCE AWARD | AWARD



Builder	Kajima Overseas Asia (Singapore) Pte. Ltd.
Developer	Singapore Management University
Principal Consultant	MKPL Architects Pte Ltd
Architectural Consultant	MKPL Architects Pte Ltd
Structural Consultant	Meinhardt (Singapore) Pte Ltd
M&E Consultant	AECOM Singapore Pte. Ltd.
Quantity Surveyor	Rider Levett Bucknall LLP
Project Manager	SIPM Consultants Pte Ltd
Façade, Acoustic and ESD Consultant	Arup Singapore Pte Ltd
Construction Cost	S\$143.9 million
Construction Period	30.0 months
Gross Floor Area	23,327 m ²

YALE-NUS COLLEGE

Institutional Buildings Category

BCA CONSTRUCTION EXCELLENCE AWARD | AWARD



Builder	Ssangyong Engineering & Construction Co., Ltd.
Developer	Yale-NUS College, National University of Singapore
Principal Consultant	Forum Architects Pte Ltd
Architectural Consultant	Forum Architects Pte Ltd
Structural Consultant	Meinhardt (Singapore) Pte Ltd
M&E Consultant	Meinhardt (Singapore) Pte Ltd
Quantity Surveyor	Rider Levett Bucknall LLP
Design Architects	Forum Architects Pte Ltd / Pelli Clarke Pelli Architects
Construction Cost	S\$219.8 million
Construction Period	32.0 months
Gross Floor Area	63,276 m ²

THREE 11

Residential Buildings - \$1,800 /m² and above Category

BCA CONSTRUCTION EXCELLENCE AWARD | AWARD



Builder	Woh Hup (Private) Limited
Developer	Aurum Land (Private) Limited
Principal Consultant	Park+Associates Pte Ltd
Architectural Consultant	Park+Associates Pte Ltd
Structural Consultant	KTP Consultants Pte Ltd
M&E Consultant	NEAM Solution
Quantity Surveyor	LCH Quantity Surveying Consultants
Landscape Consultant	Ecoplan Asia Pte Ltd
Construction Cost	S\$17.9 million
Construction Period	24.0 months
Gross Floor Area	5,344 m ²

CAIRNHILL NINE

Residential Buildings - \$1,800 /m² and above Category

BCA CONSTRUCTION EXCELLENCE AWARD | AWARD



Builder	Woh Hup (Private) Limited
Developer	Capitaland Limited
Principal Consultant	RSP Architects Planners & Engineers (Pte) Ltd
Architectural Consultant	RSP Architects Planners & Engineers (Pte) Ltd
Structural Consultant	AECOM Singapore Pte. Ltd.
M&E Consultant	Beca Carter Hollings & Ferner (S.E. Asia) Pte Ltd
Quantity Surveyor	Arcadis Singapore Pte Ltd
Landscape Consultant	COEN Design International Pte Ltd
Construction Cost	S\$148.4 million
Construction Period	38.0 months
Gross Floor Area	27,632 m ²

JEWEL @ BUANGKOK

Residential Buildings - \$1,800 /m² and above Category

BCA CONSTRUCTION EXCELLENCE AWARD | AWARD



Builder	Dragages Singapore Pte Ltd
Developer	White Haven Properties Pte Ltd (A wholly owned property of City Developments Limited)
Principal Consultant	DCA Architects Pte Ltd
Architectural Consultant	DCA Architects Pte Ltd
Structural Consultant	LSW Consulting Engineers Pte Ltd
M&E Consultant	Squire Mech Pte Ltd
Quantity Surveyor	Rider Levett Bucknall LLP
Landscape Consultant	Tinderbox Landscape Studio Pte Ltd
Construction Cost	S\$172.7 million
Construction Period	33.0 months
Gross Floor Area	55,572 m ²

SEVENTY SAINT PATRICK'S

Residential Buildings - \$1,800 /m² and above Category

BCA CONSTRUCTION EXCELLENCE AWARD | AWARD



Builder	China Construction Realty Co Pte Ltd
Developer	UOL Development (St Patrick) Pte Ltd
Principal Consultant	Consortium 168 Architects Pte Ltd
Architectural Consultant	Consortium 168 Architects Pte Ltd
Structural Consultant	TEP Consultants Pte Ltd
M&E Consultant	J. Roger Preston (S) Pte Ltd
Quantity Surveyor	Davis Langdon KPK (Singapore) Pte Ltd
Landscape Consultant	Sitetectonix Pte Ltd
Construction Cost	S\$69.7 million
Construction Period	33.0 months
Gross Floor Area	19,943 m ²

HILLSTA

Residential Buildings - \$1,800 /m² and above Category

BCA CONSTRUCTION EXCELLENCE AWARD | AWARD



Builder	China Construction (South Pacific) Development Co Pte Ltd
Developer	TrustHouse Pte Ltd (China Construction, Sekisui House & Far East Organization)
Principal Consultant	DP Architects Pte Ltd
Architectural Consultant	DP Architects Pte Ltd
Structural Consultant	KTP Consultants Pte Ltd
M&E Consultant	Rankine&Hill (Singapore) Pte Ltd
Quantity Surveyor	Davis Langdon KPK (Singapore) Pte Ltd
Landscape Consultant	Tinderbox Pte Ltd
Interior Designer	KKS International (S) Pte Ltd
Construction Cost	S\$104.7 million
Construction Period	42.0 months
Gross Floor Area	35,540 m ²

SENGKANG N2 C43A (COMPASSVALE CAPE)

Residential Buildings – Below \$1,800 /m² Category

BCA CONSTRUCTION EXCELLENCE AWARD | AWARD



Builder	Qingjian International (South Pacific) Group Development Co Pte Ltd
Developer	Housing & Development Board
Principal Consultant	Surbana Jurong Consultants Pte. Ltd.
Architectural Consultant	Surbana Jurong Consultants Pte. Ltd.
Structural Consultant	Surbana Jurong Consultants Pte. Ltd.
M&E Consultant	Surbana Jurong Consultants Pte. Ltd.
Quantity Surveyor	Surbana Jurong Consultants Pte. Ltd.
Landscape Consultant	Surbana Jurong Consultants Pte. Ltd.
Construction Cost	S\$209.4 million
Construction Period	36.0 months
Gross Floor Area	170,940 m ²

HOUGANG N9 C23 (HOUGANG CRIMSON)

Residential Buildings – Below \$1,800 /m² Category

BCA CONSTRUCTION EXCELLENCE AWARD | AWARD



Builder	China Construction (South Pacific) Development Co Pte Ltd
Developer	Housing & Development Board
Principal Consultant	P&T Consultants Pte Ltd
Architectural Consultant	P&T Consultants Pte Ltd
Structural Consultant	P&T Consultants Pte Ltd
M&E Consultant	United Project Consultants Pte Ltd
Quantity Surveyor	Arcadis Singapore Pte Ltd
Landscape Consultant	Ecoplan Asia Pte Ltd
Construction Cost	S\$53.8 million
Construction Period	31.1 months
Gross Floor Area	37,746 m ²

HOUGANG N4 C20 (HOUGANG PARKEDGE)

Residential Buildings – Below \$1,800 /m² Category

BCA CONSTRUCTION EXCELLENCE AWARD | AWARD



Builder	China Construction (South Pacific) Development Co Pte Ltd
Developer	Housing & Development Board
Principal Consultant	Surbana Jurong Consultants Pte. Ltd.
Architectural Consultant	Surbana Jurong Consultants Pte. Ltd.
Structural Consultant	Surbana Jurong Consultants Pte. Ltd.
M&E Consultant	Surbana Jurong Consultants Pte. Ltd.
Quantity Surveyor	Surbana Jurong Consultants Pte. Ltd.
Construction Cost	S\$88.0 million
Construction Period	34.5 months
Gross Floor Area	74,770 m ²

CHOA CHU KANG N8 C4 (KEAT HONG AXIS)

Residential Buildings – Below \$1,800 /m² Category

BCA CONSTRUCTION EXCELLENCE AWARD | AWARD



Builder	China Construction (South Pacific) Development Co Pte Ltd
Developer	Housing & Development Board
Principal Consultant	P&T Consultants Pte Ltd
Architectural Consultant	P&T Consultants Pte Ltd
Structural Consultant	P&T Consultants Pte Ltd
M&E Consultant	United Project Consultants Pte Ltd
Quantity Surveyor	Arcadis Singapore Pte Ltd
Landscape Consultant	Ecoplan Asia Pte Ltd
Construction Cost	S\$156.6 million
Construction Period	36.0 months
Gross Floor Area	143,320 m ²

CLEMENTI RIDGES

Residential Buildings – Below \$1,800 /m² Category

BCA CONSTRUCTION EXCELLENCE AWARD | AWARD



Builder	Teambuild Engineering & Construction Pte Ltd
Developer	Housing & Development Board
Principal Consultant	Surbana Jurong Consultants Pte. Ltd.
Architectural Consultant	Surbana Jurong Consultants Pte. Ltd.
Structural Consultant	Surbana Jurong Consultants Pte. Ltd.
M&E Consultant	Surbana Jurong Consultants Pte. Ltd.
Quantity Surveyor	Surbana Jurong Consultants Pte. Ltd.
Landscape Consultant	Surbana Jurong Consultants Pte. Ltd.
Construction Cost	S\$101.2 million
Construction Period	45.0 months
Gross Floor Area	83,851 m ²

CHOA CHU KANG N8 C1 (KEAT HONG CREST)

Residential Buildings – Below \$1,800 /m² Category

BCA CONSTRUCTION EXCELLENCE AWARD | AWARD



Builder	LC&T Builder (1971) Pte Ltd
Developer	Housing & Development Board
Principal Consultant	P&T Consultants Pte Ltd
Architectural Consultant	P&T Consultants Pte Ltd
Structural Consultant	P&T Consultants Pte Ltd
M&E Consultant	United Project Consultants Pte Ltd
Quantity Surveyor	Arcadis Singapore Pte Ltd
Construction Cost	S\$114.2 million
Construction Period	31.3 months
Gross Floor Area	92,415 m ²

CONTRACT 929A - CONSTRUCTION AND COMPLETION OF TUNNELS BETWEEN UBI AND KAKI BUKIT STATIONS AND RECEPTION TUNNELS FOR DOWNTOWN LINE STAGE 3

Civil Engineering Projects Category



BCA CONSTRUCTION EXCELLENCE AWARD | AWARD



Builder	Nishimatsu Construction Co., Ltd.
Developer	Land Transport Authority
Principal Consultant (Design)	T.Y. LIN International Pte Ltd
Principal Consultant (Civil)	ECAS Consultants Pte Ltd
Architectural Consultant	ONG&ONG Pte Ltd
Structural Consultant (Design)	T.Y. LIN International Pte Ltd
Structural Consultant (Supervision)	ECAS Consultants Pte Ltd
Construction Cost	S\$211.7million
Construction Period	71.0 months

CONTRACT 1688 CONSTRUCTION OF STATION EW30 AND VIADUCTS FOR TUAS WEST EXTENSION

Civil Engineering Projects Category

BCA CONSTRUCTION EXCELLENCE AWARD | AWARD



Builder	Shanghai Tunnel Engineering Co (Singapore) Pte Ltd
Developer	Land Transport Authority
Principal Consultant	AECOM Singapore Pte. Ltd.
Architectural Consultant	Aedas Pte Ltd
Structural Consultant	AECOM Singapore Pte. Ltd.
M&E Consultant	AECOM Singapore Pte. Ltd.
Construction Cost	S\$190.5 million
Construction Period	60.0 months

C936 CONSTRUCTION AND COMPLETION OF BENCOOLEN STATION FOR DOWNTOWN LINE STAGE 3

Civil Engineering Projects Category

BCA CONSTRUCTION EXCELLENCE AWARD | AWARD



Builder	Sato Kogyo (S) Pte. Ltd.
Developer	Land Transport Authority
Principal Consultant	Arup Singapore Pte Ltd
Architectural Consultant	Aedas Pte Ltd
Structural Consultant	Arup Singapore Pte Ltd
M&E Consultant	Land Transport Authority
Quantity Surveyor	Land Transport Authority
Qualified Person (Supervision)	GWC Consulting Pte Ltd
Construction Cost	S\$177.6 million
Construction Period	80.0 months

THE MIDTOWN & MIDTOWN RESIDENCES

Commercial/Mixed Development Buildings Category

BCA CONSTRUCTION EXCELLENCE AWARD | MERIT



Builder	Lian Beng Construction (1988) Pte Ltd
Developer	Oxley-Lian Beng Pte Ltd
Principal Consultant	RSP Architects Planners & Engineers (Pte) Ltd
Architectural Consultant	RSP Architects Planners & Engineers (Pte) Ltd
Structural Consultant	LBW Consultant LLP
M&E Consultant	Squire Mech Pte Ltd
Quantity Surveyor	Arcadis Singapore Pte Ltd
Landscape Consultant	Ecoplan Asia Pte Ltd
Construction Cost	S\$80.7 million
Construction Period	33.0 months
Gross Floor Area	16,853 m ²

JTC AVIATION TWO @ SELETAR AEROSPACE PARK

Industrial Buildings Category

BCA CONSTRUCTION EXCELLENCE AWARD | MERIT



Builder	Sembcorp Design and Construction Pte Ltd
Developer	JTC Corporation
Principal Consultant	AWP Pte Ltd
Architectural Consultant	AWP Pte Ltd
Structural Consultant	Beca Carter Hollings & Ferner (S.E. Asia) Pte Ltd
M&E Consultant	Beca Carter Hollings & Ferner (S.E. Asia) Pte Ltd
Quantity Surveyor	WT Partnership (S) Pte Ltd
Landscape Consultant	Stephen Caffyn Landscape Design
Green Mark Consultant	Kaer Pte Ltd
Construction Cost	S\$48.6 million
Construction Period	20.5 months
Gross Floor Area	19,457 m ²

FAIRPRICE HUB @ JOO KOON

Industrial Buildings Category

BCA CONSTRUCTION EXCELLENCE AWARD | MERIT



Builder	Tiong Seng Contractors (Pte) Ltd
Developer	NTUC Fairprice Co-operative Pte Ltd
Principal Consultant	ADDP Architects LLP
Architectural Consultant	ADDP Architects LLP
Structural Consultant	SCE Consultants Pte Ltd
M&E Consultant	United Project Consultants Pte Ltd
Quantity Surveyor	ST Architects & Engineers Pte Ltd
Construction Cost	S\$234.7 million
Construction Period	30.0 months
Gross Floor Area	110,894 m ²

PROPOSED ADDITIONS & ALTERATIONS TO EXISTING RIVERSIDE, SPRINGDALE, WEST SPRING AND WESTWOOD PRIMARY SCHOOLS (MOE KINDERGARTEN PHASE 2)

Institutional Buildings Category



BCA CONSTRUCTION EXCELLENCE AWARD | MERIT



Builder	Guan Ho Construction Co (Pte) Ltd
Developer	Ministry of Education
Principal Consultant	Architects Project Group LLP
Architectural Consultant	Architects Project Group LLP
Structural Consultant	Lee & Lee Consultants Pte Ltd
M&E Consultant	Conteem Engineers Pte Ltd
Quantity Surveyor	LTY+LCH (JV)
Project Manager	WSP Consultancy Pte Ltd
Construction Cost	S\$24.2 million
Construction Period	16.0 months
Gross Floor Area	10,351 m ²

ST. ANDREW'S NURSING HOME (QUEENSTOWN)

Institutional Buildings Category

BCA CONSTRUCTION EXCELLENCE AWARD | MERIT



Builder	CMC Construction Pte Ltd
Developer	Ministry of Health
Principal Consultant	Architects Team 3 Pte Ltd
Architectural Consultant	Architects Team 3 Pte Ltd
Structural Consultant	ECAS Consultants Pte Ltd
M&E Consultant	J. Roger Preston (S) Pte Ltd
Quantity Surveyor	CPG Consultants Pte Ltd
Project Manager	Davis Langdon KPK (Singapore) Pte Ltd
Construction Period	18.0 months
Gross Floor Area	10,972 m ²

RIVERSAILS

Residential Buildings - \$1,800 /m² and above Category

BCA CONSTRUCTION EXCELLENCE AWARD | MERIT



Builder	Tiong Aik Construction Pte Ltd
Developer	Benefit Investments Pte Ltd (subsidiary of Allgreen Properties Limited)
Principal Consultant	Design Link Architects Pte Ltd
Architectural Consultant	Design Link Architects Pte Ltd
Structural Consultant	KTP Consultants Pte Ltd
M&E Consultant	Beca Carter Hollings & Ferner (S.E. Asia) Pte Ltd
Quantity Surveyor	Arcadis Singapore Pte Ltd
Landscape Consultant	COEN Design International Pte Ltd
Interior Designer	Suying Design Pte Ltd
Construction Cost	S\$248.0 million
Construction Period	51.6 months
Gross Floor Area	94,789 m ²

euHabitat

Residential Buildings - \$1,800 /m² and above Category

BCA CONSTRUCTION EXCELLENCE AWARD | MERIT



Builder	Woh Hup (Private) Limited
Developer	Far East Organization & Far East Orchard Limited
Principal Consultant	DP Architects Pte Ltd
Architectural Consultant	DP Architects Pte Ltd
Structural Consultant	P&T Consultants Pte Ltd
M&E Consultant	Alpha Consulting Engineers Pte Ltd
Quantity Surveyor	Davis Langdon KPK (Singapore) Pte Ltd
Landscape Consultant	ICN Design International Pte Ltd
Construction Cost	S\$169.1 million
Construction Period	42.5 months
Gross Floor Area	61,875 m ²

SEAHILL

Residential Buildings - \$1,800 /m² and above Category

BCA CONSTRUCTION EXCELLENCE AWARD | MERIT



Builder	China Construction (South Pacific) Development Co Pte Ltd
Developer	Far East Organization
Principal Consultant	RDC Architects Pte Ltd
Architectural Consultant	RDC Architects Pte Ltd
Structural Consultant	P&T Consultants Pte Ltd
M&E Consultant	United Project Consultants Pte Ltd
Quantity Surveyor	Davis Langdon KPK (Singapore) Pte Ltd
Construction Cost	S\$126.0 million
Construction Period	40.0 months
Gross Floor Area	38,884 m ²

LUSH ACRES EXECUTIVE CONDOMINIUM

Residential Buildings - \$1,800 /m² and above Category

BCA CONSTRUCTION EXCELLENCE AWARD | MERIT



Builder	Nakano Singapore (Pte) Ltd
Developer	Verspring Properties Pte Ltd
Principal Consultant	ADDP Architects LLP
Architectural Consultant	ADDP Architects LLP
Structural Consultant	LSW Consulting Engineers Pte Ltd
M&E Consultant	United Project Consultants Pte Ltd
Quantity Surveyor	Arcadis Singapore Pte Ltd
Landscape Consultant	Site Concepts International
Interior Designer	KKS International (S) Pte Ltd
Construction Cost	S\$108.7 million
Construction Period	33.0 months
Gross Floor Area	46,532 m ²

THE HILLIER

Residential Buildings - \$1,800 /m² and above Category

BCA CONSTRUCTION EXCELLENCE AWARD | MERIT



Builder	China Construction (South Pacific) Development Co Pte Ltd
Developer	Far East Organization
Principal Consultant	RSP Architects Planners & Engineers (Pte) Ltd
Architectural Consultant	RSP Architects Planners & Engineers (Pte) Ltd
Structural Consultant	Beca Carter Hollings & Ferner (S.E. Asia) Pte Ltd
M&E Consultant	Beca Carter Hollings & Ferner (S.E. Asia) Pte Ltd
Quantity Surveyor	Davis Langdon KPK (Singapore) Pte Ltd
Landscape Consultant	Tinderbox Landscape Studio Pte Ltd
Construction Cost	S\$140.0 million
Construction Period	47.0 months
Gross Floor Area	40,025 m ²

LEEDON RESIDENCE

Residential Buildings - \$1,800 /m² and above Category

BCA CONSTRUCTION EXCELLENCE AWARD | MERIT



Builder	Woh Hup (Private) Limited
Developer	Leedon Residence Development Ltd
Principal Consultant	SCDA Architects Pte Ltd
Architectural Consultant	SCDA Architects Pte Ltd
Structural Consultant	TEP Consultants Pte Ltd
M&E Consultant	Rankine & Hill (S) Pte Ltd
Quantity Surveyor	Arcadis Singapore Pte Ltd
Landscape Consultant	SCDA Architects Pte Ltd
Construction Cost	S\$369.1 million
Construction Period	37.0 months
Gross Floor Area	85,242 m ²

HAUS @ SERANGOON GARDEN

Residential Buildings - \$1,800 /m² and above Category

BCA CONSTRUCTION EXCELLENCE AWARD | MERIT



Builder	Tiong Seng Contractors (Pte) Ltd
Developer	City Developments Pte Ltd
Principal Consultant	ADDP Architects LLP
Architectural Consultant	ADDP Architects LLP
Structural Consultant	Tham & Wong LLP
M&E Consultant	United Project Consultants Pte Ltd
Quantity Surveyor	Arcadis Singapore Pte Ltd
Construction Cost	S\$93.0 million
Construction Cost	39.0 months
Gross Floor Area	30,310 m ²

THE TEMBUSU

Residential Buildings - \$1,800 /m² and above Category

BCA CONSTRUCTION EXCELLENCE AWARD | MERIT



Builder	Shimizu Corporation
Developer	Wing Tai Holdings Ltd (on behalf of Winsmart Investment Pte Ltd)
Architectural Consultant	Arc Studio Architecture + Urbanism Pte Ltd
Structural Consultant	P&T Consultants Pte Ltd
M&E Consultant	United Project Consultants Pte Ltd
Quantity Surveyor	Rider Levett Bucknall LLP
Landscape Consultant	Tierra Design (S) Pte Ltd
Construction Period	S\$110.2 million
Gross Floor Area	35.0 months
Gross Floor Area	30,374 m ²

SKY VUE

Residential Buildings - \$1,800 /m² and above Category

BCA CONSTRUCTION EXCELLENCE AWARD | MERIT



Builder	Dragages Singapore Pte Ltd
Developer	Capitaland Limited & Mitsubishi Estate Asia Pte Ltd
Principal Consultant	DCA Architects Pte Ltd
Architectural Consultant	DCA Architects Pte Ltd
Structural Consultant	Tham & Wong LLP
M&E Consultant	Belmacs Pte Ltd
Quantity Surveyor	Rider Levett Bucknall LLP
Landscape Consultant	COEN Design International Pte Ltd
Construction Cost	S\$170.7 million
Construction Period	33.0 months
Gross Floor Area	60,517 m ²

PARC CENTROS

Residential Buildings - \$1,800 /m² and above Category

BCA CONSTRUCTION EXCELLENCE AWARD | MERIT



Builder	Wee Hur Construction Pte Ltd
Developer	Wee Hur (Punggol Central) Pte Ltd
Principal Consultant	P&T Consultants Pte Ltd
Architectural Consultant	P&T Consultants Pte Ltd
Structural Consultant	LSW Consulting Engineers Pte Ltd
M&E Consultant	Rankine&Hill (Singapore) Pte Ltd
Quantity Surveyor	Wee Hur Construction Pte Ltd
Landscape Consultant	Ecoplan Asia Pte Ltd
Construction Cost	S\$150.0 million
Construction Period	41.0 months
Gross Floor Area	59,452 m ²

THOMSON THREE

Residential Buildings - \$1,800 /m² and above Category

BCA CONSTRUCTION EXCELLENCE AWARD | MERIT



Builder	Unison Construction Pte Ltd
Developer	United Venture Development (Thomson) Pte Ltd
Principal Consultant	P&T Consultants Pte Ltd
Architectural Consultant	P&T Consultants Pte Ltd
Structural Consultant	TEP Consultants Pte Ltd
M&E Consultant	J. Roger Preston (S) Pte Ltd
Quantity Surveyor	Arcadis Singapore Pte Ltd
Landscape Consultant	Site Concepts International Pte Ltd
Construction Cost	S\$110.6 million
Construction Period	38.5 months
Gross Floor Area	41,386 m ²

GRAMERCY PARK

Residential Buildings - \$1,800 /m² and above Category

BCA CONSTRUCTION EXCELLENCE AWARD | MERIT



Builder	Hyundai Engineering & Construction Co., Ltd.
Developer	Aston Properties Pte. Ltd.
Principal Consultant	AXIS Architects Planners Pte. Ltd.
Architectural Consultant	NBBJ
Structural Consultant	LSW Consulting Engineers Pte Ltd
M&E Consultant	Beca Carter Hollings & Ferner (S.E. Asia) Pte Ltd
Quantity Surveyor	Arcadis Singapore Pte Ltd
Landscape Consultant	ICN Design International Pte Ltd
Construction Cost	S\$170.8 million
Construction Period	40.0 months
Gross Floor Area	36,302 m ²

BCA CONSTRUCTION EXCELLENCE AWARD | AWARD

PROJECT NAME	CATEGORY	BUILDER
Ascott Orchard Singapore	Commercial/Mixed Development Buildings	Woh Hup (Private) Limited
Katong Square	Commercial/Mixed Development Buildings	Master Contract Services Pte Ltd
ICPH2@KB (Greyform Building)	Industrial Buildings	Straits Construction Singapore Pte Ltd
Singapore Management University - School of Law Building	Institutional Buildings	Kajima Overseas Asia (Singapore) Pte. Ltd.
Yale-NUS College	Institutional Buildings	Ssangyong Engineering & Construction Co., Ltd.
Three 11	Residential Buildings - \$1800/m ² and above Buildings	Woh Hup (Private) Limited
Cairnhill Nine	Residential Buildings - \$1800/m ² and above Buildings	Woh Hup (Private) Limited
Jewel @ Buangkok	Residential Buildings - \$1800/m ² and above Buildings	Dragages Singapore Pte Ltd
Seventy Saint Patrick's	Residential Buildings - \$1800/m ² and above Buildings	China Construction Realty Co Pte Ltd
Hillsta	Residential Buildings - \$1800/m ² and above Buildings	China Construction (South Pacific) Development Co Pte Ltd
Sengkang N2 C43A (Compassvale Cape)	Residential Buildings - Below \$1,800/m ² Buildings	Qingjian International (South Pacific) Group Development Co Pte Ltd

BCA CONSTRUCTION EXCELLENCE AWARD | AWARD

PROJECT NAME	CATEGORY	BUILDER
Hougang N9 C23 (Hougang Crimson)	Residential Buildings - Below \$1,800/m ² Buildings	China Construction (South Pacific) Development Co Pte Ltd
Hougang N4 C20 (Hougang ParkEdge)	Residential Buildings - Below \$1,800/m ² Buildings	China Construction (South Pacific) Development Co Pte Ltd
Choa Chu Kang N8 C4 (Keat Hong Axis)	Residential Buildings - Below \$1,800/m ² Buildings	China Construction (South Pacific) Development Co Pte Ltd
Clementi Ridges	Residential Buildings - Below \$1,800/m ² Buildings	Teambuild Engineering & Construction Pte Ltd
Choa Chu Kang N8 C1 (Keat Hong Crest)	Residential Buildings - Below \$1,800/m ² Buildings	LC&T Builder (1971) Pte Ltd.
Contract 929A - Construction and Completion of Tunnels between Ubi and Kaki Bukit Stations and Reception Tunnels for Downtown Line Stage 3	Civil Engineering Projects	Nishimatsu Construction Co., Ltd.
Contract 1688 Construction of Station EW30 and Viaducts for Tuas West Extension	Civil Engineering Projects	Shanghai Tunnel Engineering Co (Singapore) Pte Ltd
SC936 Construction and Completion of Bencoolen Station for Downtown Line Stage 3	Civil Engineering Projects	Sato Kogyo (S) Pte. Ltd.

BCA CONSTRUCTION EXCELLENCE AWARD | MERIT

PROJECT NAME	CATEGORY	BUILDER
The Midtown & Midtown Residences	Commercial/Mixed Development Buildings	Lian Beng Construction (1988) Pte Ltd
JTC Aviation Two @ Seletar Aerospace Park	Industrial Buildings	Sembcorp Design and Construction Pte Ltd
Fairprice Hub @ Joo Koon	Industrial Buildings	Tiong Seng Contractors (Pte) Ltd
Proposed Additions & Alterations to Existing Riverside, Springdale, West Spring and Westwood Primary Schools (MOE Kindergarten Phase 2)	Institutional Buildings	Guan Ho Construction Co (Pte) Ltd
St. Andrew's Nursing Home (Queenstown)	Institutional Buildings	CMC Construction Pte Ltd
Riversails	Residential Buildings - \$1800/m ² and above Buildings	Tiong Aik Construction Pte Ltd
euHabitat	Residential Buildings - \$1800/m ² and above Buildings	Woh Hup (Private) Limited
Seahill	Residential Buildings - \$1800/m ² and above Buildings	China Construction (South Pacific) Development Co Pte Ltd
Lush Acres Executive Condominium	Residential Buildings - \$1800/m ² and above Buildings	Nakano Singapore (Pte) Ltd
The Hillier	Residential Buildings - \$1800/m ² and above Buildings	China Construction (South Pacific) Development Co Pte Ltd
Leedon Residence	Residential Buildings - \$1800/m ² and above Buildings	Woh Hup (Private) Limited

BCA CONSTRUCTION EXCELLENCE AWARD | MERIT

PROJECT NAME	CATEGORY	BUILDER
HAUS @ Serangoon Garden	Residential Buildings - \$1800/m ² and above Buildings	Tiong Seng Contractors (Pte) Ltd
The Tembusu	Residential Buildings - \$1800/m ² and above Buildings	Shimizu Corporation
Sky Vue	Residential Buildings - \$1800/m ² and above Buildings	Dragages Singapore Pte Ltd
Parc Centros	Residential Buildings - \$1800/m ² and above Buildings	Wee Hur Construction Pte Ltd
Thomson Three	Residential Buildings - \$1800/m ² and above Buildings	Unison Construction Pte Ltd
Gramercy Park	Residential Buildings - \$1800/m ² and above Buildings	Hyundai Engineering & Construction Co., Ltd.