



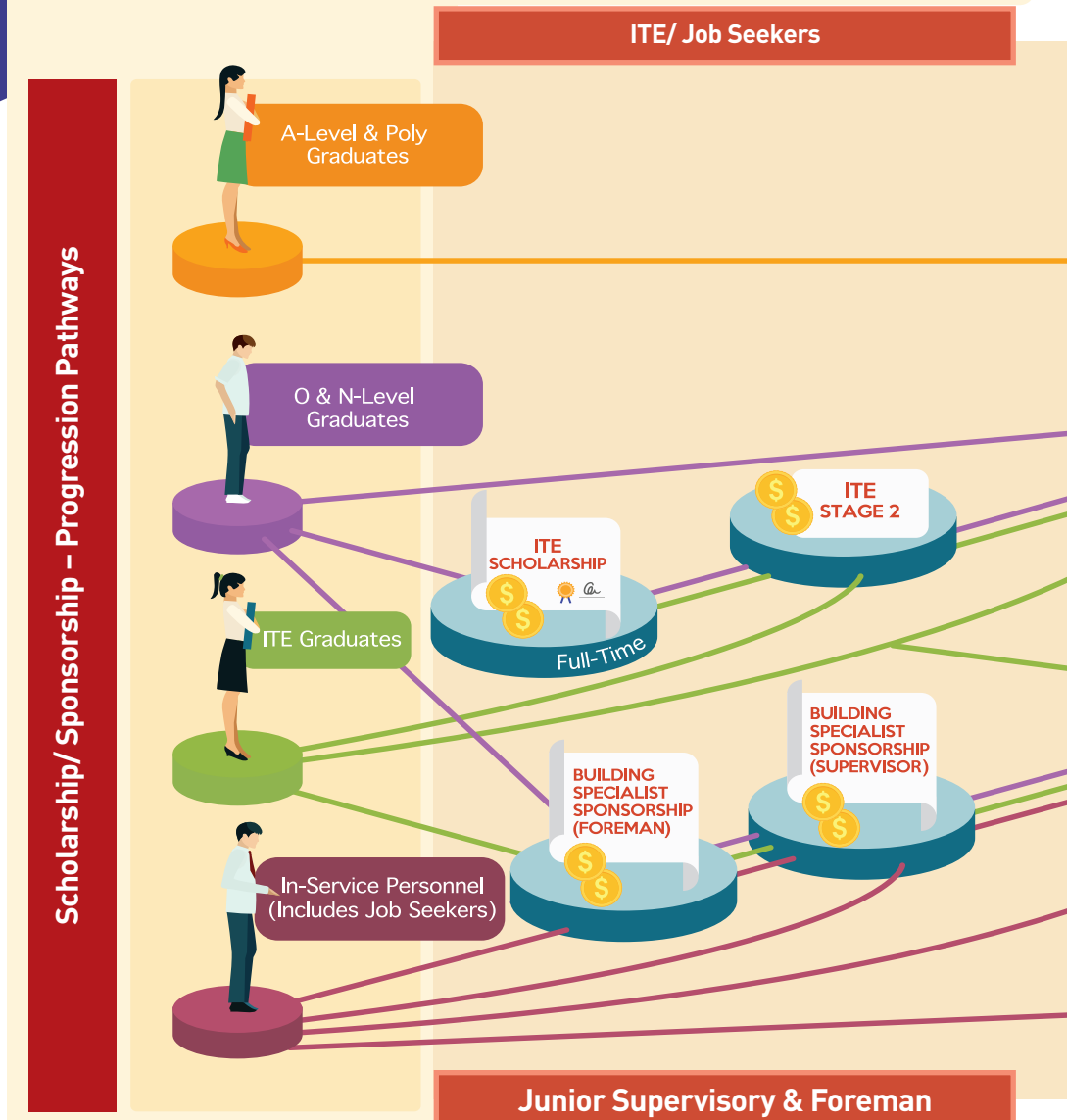
BCA-INDUSTRY BUILT ENVIRONMENT

SCHOLARSHIP AND SPONSORSHIP

PROGRAMMES HANDBOOK FOR EMPLOYERS

What is this handbook about?

This handy book details the comprehensive suite of BCA-Industry Built Environment Scholarship and Sponsorship Programmes which BCA has designed to attract talented individuals into different levels of the workforce. The programmes also offer structured progression pathways which help to retain talents in your firm and enhance your employees' competencies.

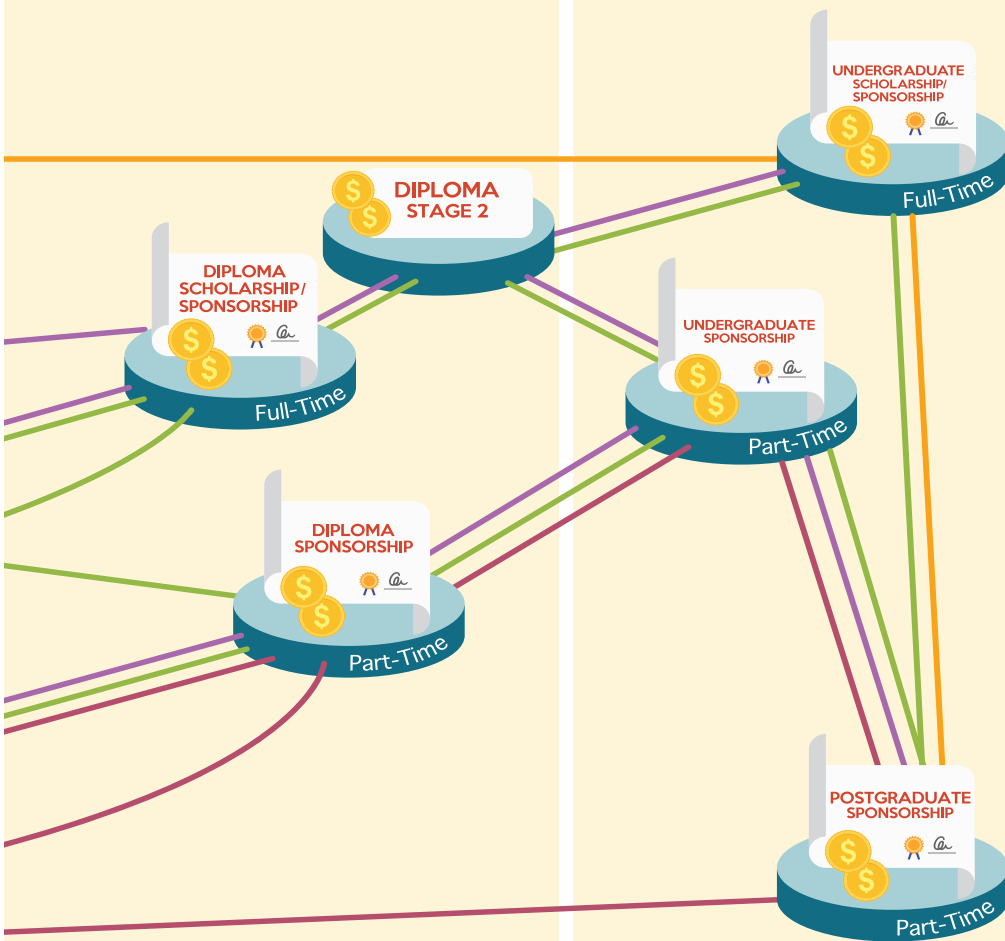


Interested industry players, like you, could co-sponsor suitable candidates with BCA and engage talents to join your firms through the programmes.

We look forward in joining hands with you to attract the high achievers into the Built Environment (BE) sector!

Polytechnic/ BCA Academy

University



TAP Supervisory

PME

BCA-Industry Built Environment Undergraduate Scholarship/ Sponsorship

What is this?

This programme is offered by BCA, in collaboration with industry firms, to students of high calibre pursuing full-time Built Environment (BE) courses at local Universities and the BCA Academy.

Who can you invest in?

- GCE 'A' level/ Polytechnic/ BCA Academy graduates
- NUS/ NTU/ SIT/ SUTD/ BCA Academy undergraduates

What are the benefits and conditions?

BCA



**CO-SPONSOR
APPROXIMATELY
70% OF THE AWARD**

Firm

- Scholar / Sponsored student joins the firm for minimum of **1 year**
- Co-sponsor approximately 30% of the award:
Scholarship*

- **S\$6,000**
per local scholar per year

Sponsorship

- **S\$3,000**
per local sponsored student per year

*Also applicable to foreigner in relevant engineering courses

Scholar / Sponsored Student

LOCAL

Scholarship

S\$18,000
PER YEAR

Sponsorship

S\$10,000
PER YEAR

Tenable Undergraduate Courses

Institutions

- Civil Engineering
- Construction Management (Building)

BCA ACADEMY

- Architecture
- Civil Engineering
- Electrical Engineering
- Environmental Engineering
- Mechanical Engineering
- Project and Facilities Management
- Real Estate



- Civil Engineering
- Electrical and Electronic Engineering
- Environmental Engineering
- Mechanical Engineering



- Civil Engineering
- Sustainable Infrastructure Engineering (Building Services)



- Architecture and Sustainable Design
- Engineering Product Development



BCA-Industry Built Environment Diploma Scholarship/ Sponsorship

What is this?

This programme is offered by BCA, in collaboration with industry firms, to students of high calibre pursuing full-time Built Environment (BE) courses at local Polytechnics and the BCA Academy.

The programme is structured in two stages:

- **Stage 1 (Full-Time Study)**
provides financial incentives during full-time diploma study
- **Stage 2 (Post-Diploma Development)**
provides a clear progression path and attractive salary for diploma graduates

Who can you invest in?

Stage 1:	ITE/GCE 'O' or 'N' level graduates and students of local polytechnics/BCA Academy in tenable courses
Stage 2:	<ul style="list-style-type: none">• Sponsor graduates who have completed Stage 1 Diploma Study Phase• Fresh Diploma graduates from built environment courses with less than 1 year experience in the built environment sector

What are the benefits and conditions?

Full-Time Study - Stage 1

BCA



**CO-SPONSOR
APPROXIMATELY
70% OF THE AWARD**

Scholar / Sponsored Student

Scholarship	Sponsorship
S\$15,000 PER YEAR	S\$7,000 PER YEAR

Firm

- Scholar / Sponsored student joins the firm for **minimum of 2 years**
- Co-sponsor approximately 30% of the award:
 - Scholarship***
 - **S\$4,000**
per local scholar per year
 - Sponsorship**
 - **S\$2,000**
per local sponsored student per year

*Applicable to foreigner

Post- Diploma Development -Stage 2

BCA / GOVERNMENT

INCENTIVES FOR FIRMS


\$5,000
PER YEAR
PER SPONSORED
EMPLOYEE*

CO-SPONSOR UPGRADING
COURSE FEES

Firm

- Min. 2-year employment
- Min. monthly basic salary per local
 - S\$2,200 (1st Year),
 - S\$2,400 (2nd Year)
- Offer Structured On-Job-Training in the first year
- Co-sponsor upgrading course fee

*Subject to fulfilment of the terms and conditions

Programme	Tenable Diploma Courses	Institutions
Diploma Stage 1	<ul style="list-style-type: none"> • Architectural (Technology) • Construction Engineering • Construction Information Technology • Design (Interior & Landscape) • Electrical Engineering & Clean Energy • Facilities Management • Mechanical Engineering (Green Building Technology) • Quantity Surveying 	BCA ACADEMY
	<ul style="list-style-type: none"> • Electrical Engineering with Eco-Design • Spatial Design • Sustainable Architectural Design 	 NANYANG THE INNOVATIVE POLYTECHNIC
	<ul style="list-style-type: none"> • Clean Energy Management • Electrical Engineering • Environmental & Water Technology • Hotel & Leisure Facilities Management • Mechanical Engineering • Real Estate Business • Sustainable Urban Design & Engineering 	 NGEE ANN POLYTECHNIC

Programme	Tenable Diploma Courses	Institutions
-----------	-------------------------	--------------

**Diploma
Stage 1**

- Green Building Energy Management



- Architecture
- Civil Engineering with Business
- Electrical & Electronic Engineering
- Energy Systems & Management
- Hotel & Leisure Facilities Management
- Integrated Events & Project Management
- Interior Design
- Landscape Architecture
- Mechanical Engineering



**Diploma
Stage 2**

- Specialist Diploma in Architectural Technology
- Specialist Diploma in Building Cost Management
- Specialist Diploma in Building Information Modeling (BIM)
- Specialist Diploma in Construction Management
- Specialist Diploma in Construction Productivity
- Specialist Diploma in Design for Manufacturing & Assembly (DfMA)
- Specialist Diploma in Facility & Energy Management
- Specialist Diploma in Interior & Landscape Design
- Specialist Diploma in Lean Construction
- Specialist Diploma in M&E Coordination
- Specialist Diploma in Virtual Design & Construction (VDC)



- Diploma (Conversion) in Facility Management
- Specialist Diploma in Sustainable Facilities Management



- Advanced Diploma in Building Automation & Services
- Advanced Diploma in Civil Engineering
- Specialist Diploma in Civil Engineering (Productivity & Technology)
- Specialist Diploma in Energy Efficiency & Management



- Specialist Diploma in Energy Management & Sustainable Design



BCA-Industry Built Environment ITE Scholarship

What is this?

This programme is offered by BCA, in collaboration with industry firms, to young talents pursuing full-time BE courses at the ITE colleges.

The programme is structured in two stages:


- **Stage 1 (Full-Time Study)**
provides financial incentives during ITE study
- **Stage 2 (Post-ITE Development)**
provides a clear progression path and attractive salary for ITE graduates

Who can you invest in?

Stage 1:	ITE students in tenable courses
Stage 2:	ITE graduates or firms' existing employees who are less than 12 months after graduation or after their Operationally-Ready Date (ORD)

What are the benefits and conditions?

Full-Time Study - Stage 1

BCA  CO-SPONSOR APPROXIMATELY 80% OF THE AWARD	Firm <ul style="list-style-type: none">• Scholar joins firm for 2 years• Co-sponsor 20% of the award at S\$1,400 per local scholar per year Scholar \$7,000 PER YEAR FOR A MAXIMUM OF 2 YEARS
---	--

Post- ITE Development -Stage 2

BCA / GOVERNMENT

INCENTIVES FOR FIRMS

\$5,000

PER YEAR
PER SPONSORED
EMPLOYEE*

CO-SPONSOR
UPGRADING
COURSE FEES



Firm

- 3-year employment
- Min. monthly basic salary:
 - S\$1,850 (1st Year)
 - S\$2,050 (2nd Year)
 - S\$2,350 (3rd Year)
- Offer Structured On-Job-Training
- Co-sponsor upgrading course fees

*Subject to fulfilment of the terms and conditions

Programme

Tenable ITE Courses

Institutions

ITE
Stage 1
(Full-Time
Study)

Higher Nitec

- Higher Nitec in Civil & Structural Engineering Design
- Higher Nitec in Electrical Engineering
- Higher Nitec in Facility Management
- Higher Nitec in Facility Systems Design
- Higher Nitec in Mechanical Engineering
- Higher Nitec in Space Design Technology



Programme

Tenable ITE Courses

Institutions

ITE

Stage 1
(Full-Time
Study)

Nitec

- Nitec in Electrical Technology (Power & Control)
- Nitec in Facility Technology (Air-Conditioning & Refrigeration)
- Nitec in Facility Technology (Mechanical & Electrical Services)
- Nitec in Facility Technology (Vertical Transportation)
- Nitec in Mechanical Technology
- Nitec in Space Design (Architecture)
- Nitec in Space Design (Interior & Exhibition)

**ITE**

Stage 2
(Post-ITE
Development)

- National Building Qualification (NBQ)
- BIM Modelling (Architecture/ MEP/Structure)
- Specialist Diploma in BIM

BCA ACADEMY

BCA-Industry Built Environment Sponsorship Programmes (Part-Time)

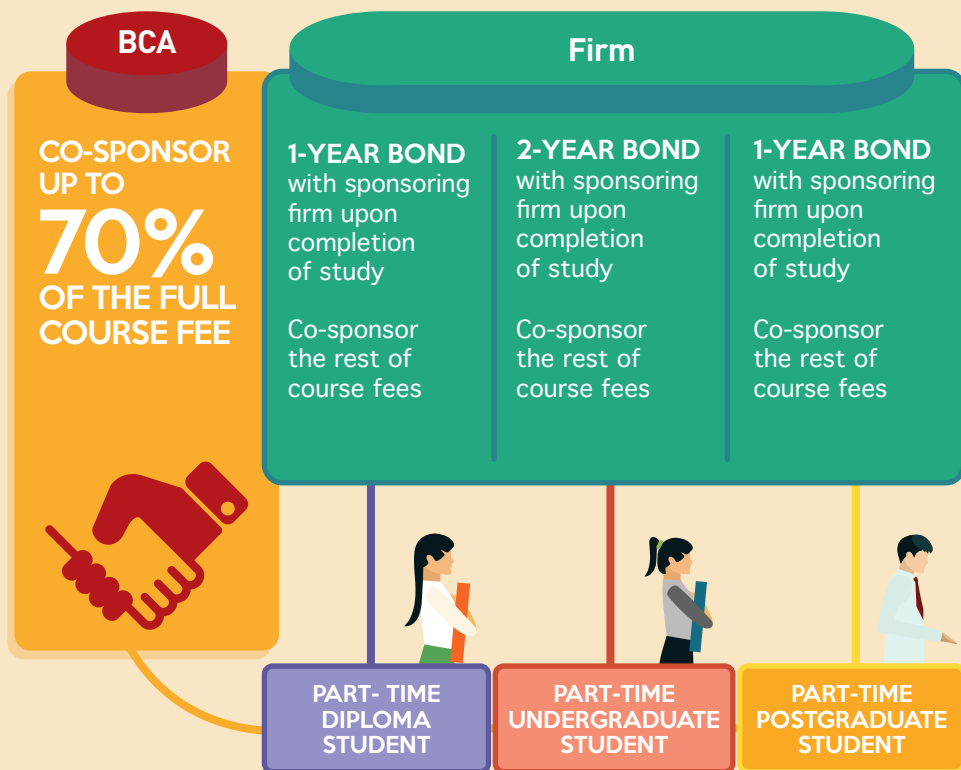
What is this?






The Sponsorship programmes (for part-time studies) are offered by BCA, in collaboration with industry firms, to in-service personnel with the opportunity to upgrade their skills and knowledge pursuing part-time diploma, undergraduate or postgraduate courses at local institutions.

Who can you invest in?

Existing employees who are Singapore citizens or Singapore Permanent Residents, accepted by applicable institution in the tenable courses

What are the benefits and conditions?



Programme	Tenable Part-Time Courses	Institutions
Part-Time Postgraduate	<ul style="list-style-type: none"> Major in Construction Productivity 	 
	<ul style="list-style-type: none"> Civil Engineering Environmental Engineering International Construction Management Mechanical Engineering 	
	<ul style="list-style-type: none"> Building Performance and Sustainability Civil Engineering Electrical Engineering Environmental Engineering Environmental Management Geotechnical Engineering Integrated Sustainable Design Mechanical Engineering 	
	<ul style="list-style-type: none"> Human Capital Management 	

Programme	Tenable Part-Time Courses	Institutions
Part-Time Undergraduate	<ul style="list-style-type: none"> • Building and Project Management 	BCA ACADEMY  SIM UNIVERSITY
	<ul style="list-style-type: none"> • Construction Management(Building) 	BCA ACADEMY  THE UNIVERSITY OF NEWCASTLE AUSTRALIA
	<ul style="list-style-type: none"> • Facilities and Event Management 	BCA ACADEMY  SIM UNIVERSITY
	<ul style="list-style-type: none"> • Electrical and Electronic Engineering • Mechanical Engineering 	 NANYANG TECHNOLOGICAL UNIVERSITY
	<ul style="list-style-type: none"> • Civil Engineering • Mechanical Engineering 	 NUS National University of Singapore
	<ul style="list-style-type: none"> • Human Resource Management 	 SIM UNIVERSITY
Part-Time Diploma	<ul style="list-style-type: none"> • Construction Engineering • Electrical Engineering & Clean Energy • Facilities Management • Geo-Spatial Information and Technology 	BCA ACADEMY
	<ul style="list-style-type: none"> • Engineering(Building Services & Fire Safety) • Engineering(Electrical) • Engineering(Mechanical) 	 NGEE ANN POLYTECHNIC
	<ul style="list-style-type: none"> • Engineering(Mechanical Technology) • Engineering(Power Engineering) 	SINGAPORE POLYTECHNIC  SP
	<ul style="list-style-type: none"> • Business Practice(International Human Resources Management) 	 REPUBLIC POLYTECHNIC

BCA-Industry Built Environment Building Specialist Sponsorship

What is this?

Combining employment and classroom-based vocational training in the Built Environment sector, the BCA-Industry Built Environment Building Specialist Sponsorship (BSS) programme offers trainees attractive remuneration while deepening their skills specialisation and providing a clear career progression path via the Building and Construction Authority's (BCA) CoreTrade Scheme*.

*The Construction Registration of Tradesman (CoreTrade) is a workers' registration scheme administered by BCA for skilled and experienced construction personnel in key construction trades.

Who can you invest in?

A) Crane Operation**

Stage 1

- Existing employee and job seekers to train up as crane operators

Stage 2

- Crane operators willing to cross-train to other crane types or take up advanced trainings under the Crane Operation Programme[^]

[^]Have minimum 3 years of crane operating experience

B) Foreman and Supervisor Development**

Stage 1

- Existing employee and job seekers
- Existing CoreTrade Tradesmen (<3 years' relevant experience)

Stage 2

- Trainee who completed Stage 1
- Existing employee
- CoreTrade Foreman
- Job seekers (with relevant experience)

**For Singapore Citizens and Singapore Permanent Residents

What are the benefits and conditions?

A) Crane Operation

BCA

CO-SPONSOR
APPROXIMATELY

80%
OF THE COURSE FEE



INCENTIVES FOR FIRMS

S\$5,000
PER YEAR PER
SPONSORED EMPLOYEE*

*Subject to fulfilment of BSS programme terms and conditions

FIRM

- 2-year employment
- Offer Structured On-Job-Training
- Enrol and co-sponsor 20% of the course fees

Crane Operation Stage 1

Min. monthly basic salary:

- S\$2,000 (tower/crawler crane)
- S\$2,200 (mobile crane)

Crane Operation Stage 2[^]

Min. monthly basic salary:

- S\$2,400 (tower/crawler crane)
- S\$2,500 (mobile crane)

[^]To be granted direct entry into Stage 2, sponsored employees must possess the valid license of a particular crane operation type with 2 years' of crane operating experience or a crane license that has expired for more than 3 years.

B) Foreman and Supervisor Development

BCA / GOVERNMENT

CO-SPONSOR UP TO
80%
OF THE
TRAINING COURSE



INCENTIVES FOR FIRMS

\$5,000
PER YEAR PER
SPONSORED EMPLOYEE*

*Subject to fulfilment of BSS programme terms and conditions

FIRM

- 2-year employment
- Offer Structured On-Job-Training
- Enrol and co-sponsor 20% of the course fees

Foreman Development Stage 1

Min. monthly basic salary:

- S\$1,850 (1st Year)
- S\$2,100 (2nd Year)

Supervisor Development Stage 2

Min. monthly basic salary:

- S\$2,300 (1st Year)
- S\$2,600 (2nd Year)

Programme	Tenable BSS Courses*	Institutions / Training Centre
BSS Crane Operation	<ul style="list-style-type: none"> • Bridging Course for Crane Operators • Crawler Crane Operation • Luffing Jib Tower Crane Operation • Mobile Crane (Truck Mounted) Operation • Mobile Crane (Off-road Rough Terrain) • Signaller and Rigger Course • Tower Crane (Saddle Jib) Operation 	BCA ACADEMY
	<ul style="list-style-type: none"> • Bridging Course for Crane Operators • Crawler Crane Operation • Enhanced Tower Crane Operation Course for HDB Projects • Mobile Crane (Truck Mounted) Operation • Tower Crane (Saddle Jib) Operation 	 <small>● Piling ● Training ○ Testing</small>
BSS Foreman Development (Stage 1)	<ul style="list-style-type: none"> • Builder Certificate in Plumbing & Pipe-fitting 	BCA ACADEMY
	<ul style="list-style-type: none"> • Nitec in Electrical Technology (Power & Control) • Nitec in Facility Technology 	
BSS Supervisor Development (Stage 2)	<ul style="list-style-type: none"> • Certificate in Gas Technology • Certificate in Gas Service Worker Course 	BCA ACADEMY
	<ul style="list-style-type: none"> • Diploma in Engineering (Power Engineering) 	
*All BSS courses are part-time courses		

ANNEX - FREQUENTLY ASKED QUESTIONS (FAQ)

1. How am I qualified to be a sponsoring firm?

Your firm must be related to the Built Environment industry.

2. What are the benefits for joining BCA's BE-Industry Scholarship and Sponsorship programmes?

You would get to enjoy the awardees' contribution at your company after or during their course of study either by serving their bond or through internship, depending on the programmes, for a minimum period of 1 year.

In addition, the scholarship/ sponsorship amount that you have to offer is approximately 30% or less (depending on the programmes) and BCA would sponsor the remaining.

Furthermore, you will get an incentive of S\$5,000 when you participate in the Diploma Stage 2, ITE Stage 2 and BSS programmes.

By participating in the programmes, it will also help to improve your firm's Workforce Development Index.

3. Can I participate in more than one programme?

Yes, you can apply for all the programmes that you are interested in. The officer-in-charge for the respective programmes would be happy to guide you through the participation process.

4. Do I get to choose the candidates to shortlist for interviews?

Yes, there would be a list of shortlisted candidates where you would get to choose from.

5. Do I disburse the scholarship/sponsorship incentives in full to the awardees directly?

Yes, you would be required to disburse 100% of the incentives to the awardees directly and BCA would reimburse you upon the submission of the supporting documents of the disbursements.



To apply:

Please contact us at

BCA_Industry_SS@bca.gov.sg

Building and Construction  Authority

www.buildingcareers.gov.sg

