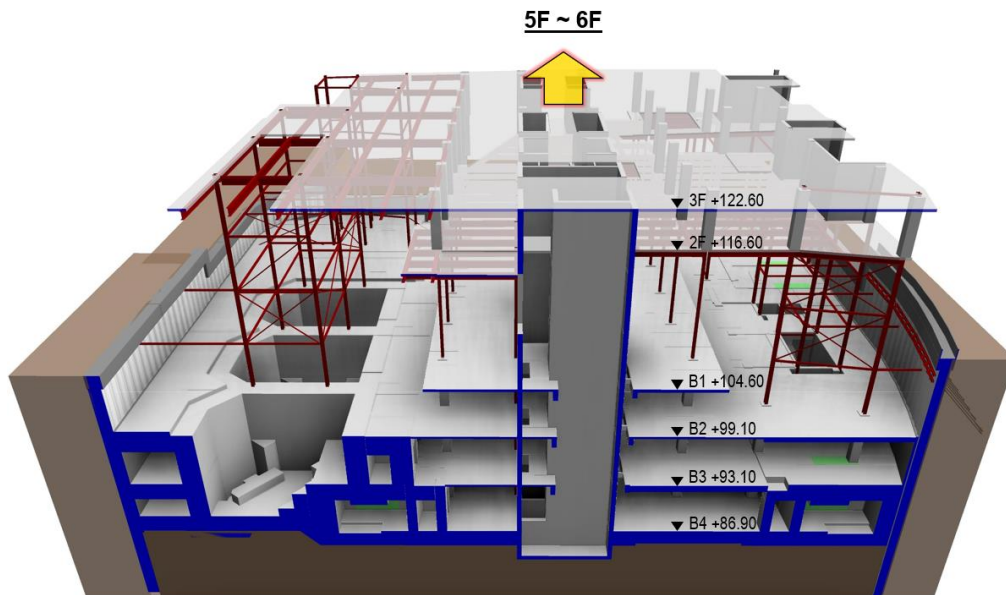


## ANNEX



**Figure 1:** Cross-section of bunkers at basement of National Cancer Centre Singapore. The complex construction process involved the management of basement works (indicated in blue) and superstructure. Permanent steel structure frames (in red) were erected while basement works were ongoing.



**Figure 2:** The Hybrid Precast Column-Structural Steel system used at the superstructure eliminated laborious on-site formwork erection to accelerate on-site works.