

## COMPUTATION OF SUBMISSION QUALITY POINTS (S-PTS)

### Quality Fee Method for Procurement of Accredited Checking Services [QFM(AC)]

BCA introduced the Quality Fee Method [QFM(AC)] to all procurement of Accredited Checking services (including tenders & quotations) from 1 Apr 2018.

BCA plans to introduce the Submission Quality-score (S-score) as an additional Quality attribute under the QFM(AC) soon. The S-score will be based on technical lapses in AC's checking submissions clarified through BCA's Written Directions (WD) and is a proxy for the quality of checks provided by the AC. The Submission Quality Points (S-PTS) will be used to compute the S-Score.

### Technical Lapse (TL)

For structural works that require an AC's certificate, the AC together with the professional engineer will make structural plan submissions (ST) to BCA. Technical lapse (TL) is the parameter used to evaluate the quality of AC's structural plan submission to BCA. AC's reply to items under Technical Group in Written Direction (WD) will be checked for TL. Each ST will be categorised based on the most severe TL identified from AC's reply to WD. *For example, a WD contains only 2 items under Technical Group, Based on AC's reply, one item is identified as a TL without design change while the other is identified as a TL with design change. Hence, this ST will be considered as ST having TL with design change. A TL with design change will have greater impact on the S-PTS.*

### Index for Technical Lapse (%TL)

Index for Technical Lapse (%TL) for each AC is determined based on AC's individual submission quality and AC's submission quality compared with all the ACs within one year of assessment period. (Please refer to Figure 1).

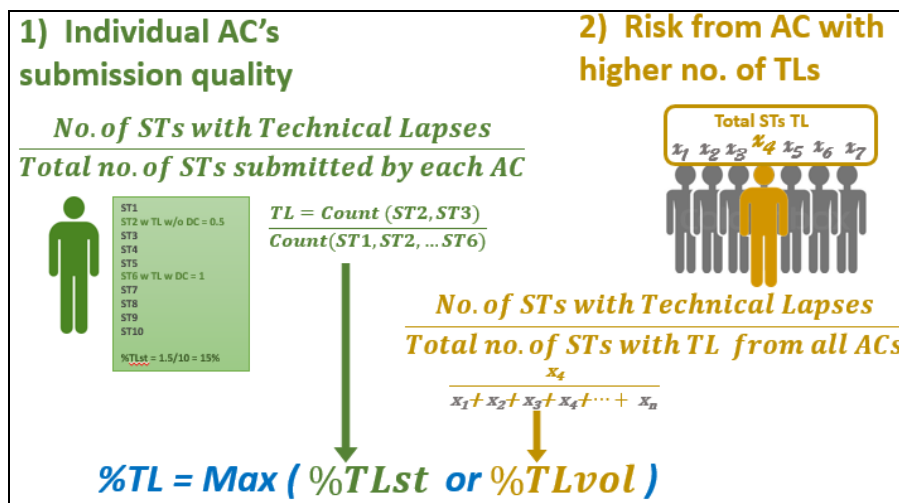


Figure 1 Components used to calculate %TL

### Submission Quality Points (S-PTS)

ACs will be ranked based on their %TL. AC with lower %TL will be ranked higher. Tiered S-PTS will be awarded to AC based on ranking percentile. Better performing ACs (i.e. with lower %TL) will get higher S-PTS. (Please refer to Figure 2).

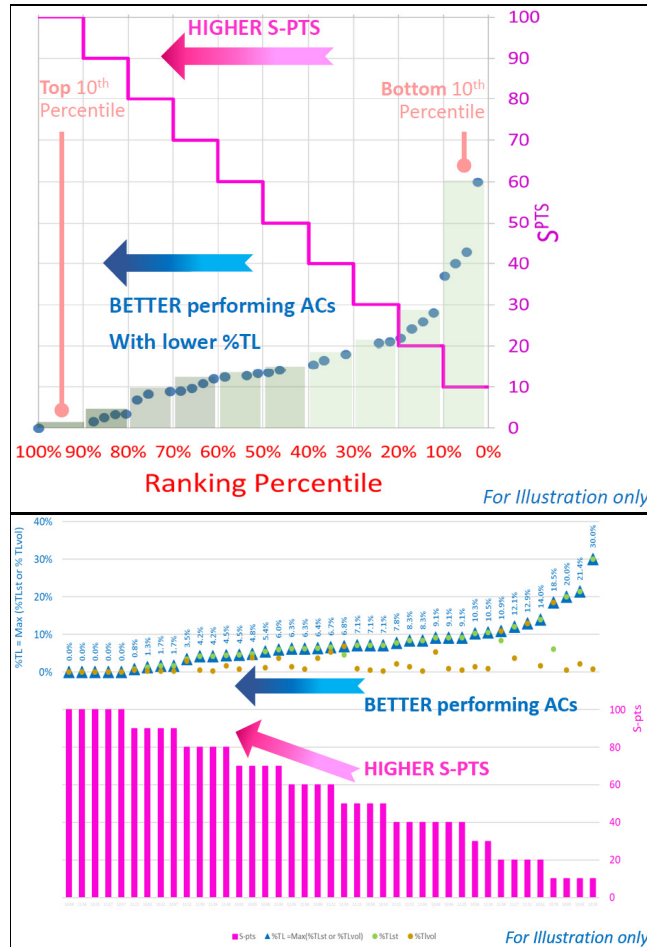


Figure 2 Ranking Percentile and tiered S-PTS (for illustration only)

S-PTS will be updated and disseminated to individual AC on a half yearly basis (in March & September each year). It will be used to compute S-Score under QFM(AC).

### Contacts

For clarifications, you can contact the following officers:

	Name	DID	Email
BCA	Goh Hooi Theng (Ms)	6804 4635	GOH_Hooi_Theng@bca.gov.sg
	Steven Cheong	6804 4758	Steven_cheong@bca.gov.sg