



BCA AWARDS 2023

Recognising Excellence in the Built Environment



BCA UNIVERSAL DESIGN EXCELLENCE AWARD



The BCA Universal Design Excellence Award (UDEA) recognises exemplary projects, developers and architects for their pursuit of Universal Design (UD) implementation in their building projects and innovations in user-friendly designs.

Through the UDEA, BCA hopes to encourage the building industry to adopt UD – a design philosophy for creating a more inclusive and accessible living environment for everyone including the young, the old and persons with different abilities.

The UDEA recipients are shortlisted from projects which have achieved a rating of 'A' under the UDindex self-assessment framework.



BIRD PARADISE & MANDAI WILDLIFE WEST



DEVELOPER

Mandai Park Development Pte Ltd
Mandai Wildlife Group

ARCHITECT

RSP Architects Planners & Engineers (Pte) Ltd

Key Features

- Within the walk-through aviaries, 'suspension' bridges and viewing platforms are strategically located and designed to be accessible, offering expansive views for everyone to enjoy.
- Safety barriers along elevated walkway are designed to be porous which allows children and visitors on wheelchair to view from a lower angle.
- Thematic pavilions, transition buildings, and viewing decks throughout the park serve as rest stops with plenty of seats for rest and to comfortably interact with the animal exhibits.
- Large gathering areas like the Entrance and Central Plazas provide easy orientation for the visitors to locate family-friendly amenities such as guest services, family toilets, nursing rooms and water refill stations.

CHANGI TERMINAL 2 EXPANSION



DEVELOPER

Changi Airport Group (Singapore) Pte Ltd

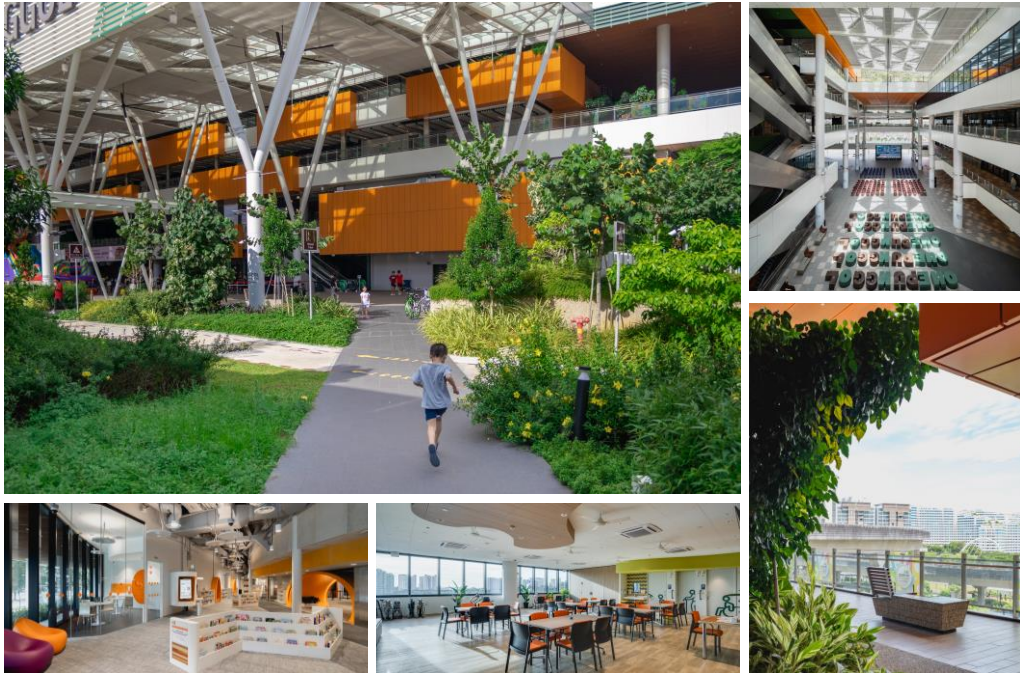
ARCHITECT

RSP Architects Planners & Engineers (Pte) Ltd

Key Features

- Transformed check-in layout in the Departure Hall, with the new orientation of the Check-in islands sets out to intuitively guide departing passengers through bag check-in and Departure Immigration.
- The Arrival and Departure Immigration Halls are expanded and reconfigured with Special Assistance Lane, enabling travellers with reduced mobility and invisible disability, a family of up to four persons to enjoy the convenience of automated immigration clearance.
- Garden-like lounges at the Arrival Meeters-Greeters Hall, featuring double volume landscaped seating areas, are illuminated with soft daylight. Thoughtful touches such as resting points with seats of different heights cater to a diverse group of users.

ONE PUNGGOL



DEVELOPER

People's Association

ARCHITECT

DP Architects Pte Ltd

Key Features

- Punggol Regional Library has an overarching theme of 'inclusivity'. The Library's has a curated Person with Disability collection where book shelves are specially designed. A check-out pod allowing direct passing of wheelchair users enable easy borrowing of library materials.
- 1st storey of the library is designed for infants and children. The family lounge allows parents to prepare food for the babies. Calm rooms are also located here to provide a therapeutic environment for children who need such spaces.
- The square acts as the heart of the development, a veritable agora for meeting and social interaction. It is a space of movement and activity: two sets of vertical lifts and escalators give clear directional cues to access each of the upper levels

Organiser



An Initiative Under

