



# BCA AWARDS 2025

---

Recognising Excellence in the Built Environment

# BCA UNIVERSAL DESIGN EXCELLENCE AWARD



The BCA Universal Design Excellence Award (UDEA) recognises exemplary projects, developers and architects for their pursuit of Universal Design (UD) implementation in their building projects and innovations in user-friendly designs.

Through the UDEA, BCA hopes to encourage the building industry to adopt UD – a design philosophy for creating a more inclusive and accessible living environment for everyone including the young, the old and persons with different abilities.

The UDEA recipients are shortlisted from projects which have achieved a rating of 'A' under the UIndex self-assessment framework.



# NORTH EAST LINE - PUNGGOL COAST STATION



*"Punggol Coast Station introduces innovative ideas in public transport infrastructure, focusing on sustainability, constructibility, and **community-centric features**. This approach positions the **station as the heart of the community**, aligning with the vision to make **public transport inclusive for all**." — Land Transport Authority*

**DEVELOPER** Land Transport Authority (LTA)  
**ARCHITECT** Land Transport Authority (LTA)

## PROJECT DETAILS

Punggol Coast Station (PGC), the terminal station on the North East Line (NEL), incorporates Universal Design features to provide seamless connectivity and accessibility for residents, commuters, and visitors to the JTC Business Park, Singapore Institute of Technology, and Punggol Coast Mall.

## KEY UD FEATURES

- **Community-Centric Design:** The Outdoor Civic Commons, a sheltered and naturally ventilated welcoming courtyard with amphitheater seating, serves as an inclusive community space for events and social interactions.
- **District Connectivity:** 2 barrier-free exits - one connected to Punggol Coast Mall and bus interchange via a sheltered linkway, another integrated with Punggol Digital District's Nexus plaza for direct access to surrounding developments.
- **Intuitive Wayfinding:** Clear sightlines combined with strategic lighting, architectural elements, standard tactile guiding system and easy signage navigation system.
- **Enhanced Accessibility:** Centralised Passenger Service Centre with hearing enhancement system, spacious lifts with audio announcements and large lift buttons, and wide fare gates accommodating wheelchairs and guide dogs.
- **User-Focused Design:** Generous platform seating areas with comfortable armrest/backrest, complemented by family-friendly facilities such as family and accessible toilets.
- **Collaborative Design Process:** Facilities were refined through active engagement with social service agencies and elderly communities to ensure an inclusive design for all.

# SINGAPORE INSTITUTE OF TECHNOLOGY PUNGGOL CAMPUS (CAMPUS HEART)



All photos above credit to Shiya Creative Studio

*"The implementation of Universal Design at SIT Punggol Campus is both a practical and ethical decision. It reflects SIT's dedication to building a campus that is **not only technologically advanced and community-centred but also compassionate and inclusive.**"*

— Singapore Institute of Technology

**DEVELOPER** Singapore Institute of Technology  
**ARCHITECT** WOHA Architects Pte Ltd

## PROJECT DETAILS

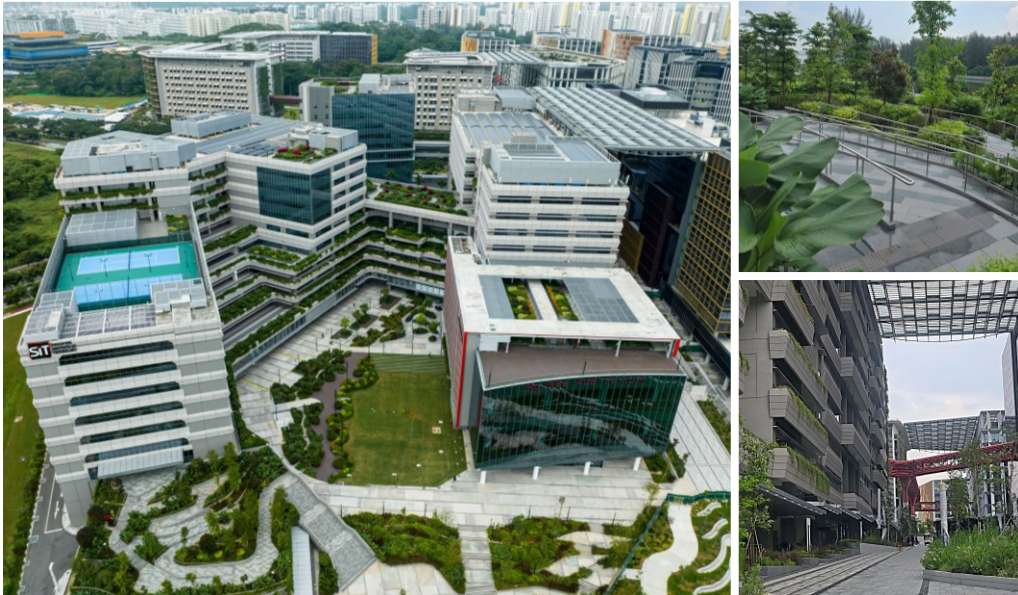
Designed as Singapore's first car-lite university campus, this development creates a barrier-free "Campus-in-a-Park" that seamlessly integrates with Punggol Digital District.

## KEY UD FEATURES

- **Campus-in-a-Park:** Chain of buildings organised around existing vegetation including the Punggol Heritage Trail. Green features include verdant landscapes, podium planters, sky gardens and gable-end green walls. Dual-level ground plane separates pedestrians from vehicles, enabling 24/7 barrier-free access at upper level.
- **Inclusive Learning Environment:** Lectorials feature hearing enhancement systems and adjustable furniture. Social amphitheatres and Sky Terraces provide break-out spaces with varied seating options.
- **Community-Centric Design:** Sheltered Forum with amphitheatre seating, an approximately 800-seater Food Court overlooking Campus Green, and metal-cladded Canopy Walks spanning between buildings. A 2km Collaboration Loop connects the campus to prayer room and lactation facilities within the district.
- **Active Mobility and Family-Friendly Features:** End-of-trip facilities include accessible showers and bicycle parking near vertical cores. Other accessible sanitary facilities including larger accessible washrooms, ambulant-friendly toilets and child-height amenities. Strategic placement of family and accessible parking near lift lobbies.



# SINGAPORE INSTITUTE OF TECHNOLOGY PUNGGOL CAMPUS (CAMPUS COURT)



*"RSP has envisioned a **user-centric campus design** that goes beyond compliance with the Universal Design Index (UDI), fostering a **resilient, inclusive, and future-ready environment**. Our design philosophy embraces sustainability, flexibility, and technology integration, offering **enriching spatial experiences for diverse user groups — students, staff, visitors, and the community.**" — RSP*

**DEVELOPER** Singapore Institute of Technology  
**ARCHITECT** RSP Architects Planners & Engineers (Pte) Ltd

## PROJECT DETAILS

The Campus Court at SIT's Punggol Campus creates an inclusive waterfront environment in Punggol Digital District. Along Punggol Promenade Nature Walk, stepped buildings cascade towards the waterfront, creating accessible green spaces while maintaining visual connectivity with Coney Island.

## KEY UD FEATURES

- **Waterfront Campus Design:** Uniquely positioned along Punggol Promenade Nature Walk, with buildings stepping down to create accessible green gardens at various heights. 70% ground porosity enables seamless integration with Park Connector Network and public spaces.
- **Inclusive Circulation:** Fully sheltered walkways, gentle ramps and at-grade pathways ensure barrier-free navigation. Direct basement connection to MRT station with dedicated pedestrian routes separated from vehicular traffic.
- **User-Centric Facilities:** Reconfigurable classrooms, sensory gardens, and sports courts with designated wheelchair spaces cater to diverse needs. Accessible public areas include food courts, galleries, and auditoriums that come with hearing enhancement systems and wheelchair-accessible stage.
- **Family-Friendly Amenities:** Comprehensive facilities include larger accessible washrooms, ambulant-friendly cubicles, nursing rooms with baby carriage spaces, and child-protection seats.
- **Thoughtful Wayfinding Design:** Color-coded zones, tactile surfaces, and landmarks guide users along the central landscaped boulevard. Blocks E2 and E3 serve as iconic gateways, establishing strong visual anchors at campus ends.

# MANDAI RAINFOREST RESORT BY BANYAN TREE



*"Nestled within the Mandai Wildlife Reserve, every stay at Mandai Rainforest Resort is envisioned to be immersive. **Where guests with differing needs and abilities can feel connected to nature in a unique and thoughtfully designed full-service accommodation.**"*

— Mandai Wildlife Group

**DEVELOPER & OWNER** Mandai Wildlife Group  
**ARCHITECT** WOW Architects Pte Ltd

## PROJECT DETAILS

Mandai Rainforest Resort by Banyan Tree is nestled within the 126-hectare Mandai Wildlife Reserve. It is also the first resort in Singapore to achieve the Green Mark Super Low Energy (SLE) certification. Integrating seamlessly with the surrounding forest scape, the 338-room resort features a variety of room categories including accessible, elder-friendly, and family accommodations within a rainforest setting.

## KEY UD FEATURES

- **Inclusive Arrival Experience:** Seamless barrier-free journey from a dedicated resort carpark with accessible parking near lift lobbies. Sheltered walkways with gentle gradients throughout, complemented by wheelchair-friendly buggy service and comfortable waiting areas.
- **Accessible Accommodations:** 5 wheelchair-accessible rooms, 7 elder-friendly rooms with night lighting and emergency systems, and rooms with connecting doors for caregivers. 24 treehouse pods available at various heights, including ground-level options for inclusive access.
- **Inclusive Public Facilities:** All-Day Dining venue features flexible partitioned spaces and child-friendly areas. Discovery Forest rooftop garden offers multi-sensory experiences through tactile plants and educational elements. Hearing enhancement systems installed at key touchpoints including check-in counters and function rooms.
- **Family-Centric Design:** Rangers' Club and playground integrated with landscaped berms for safety. Comprehensive family amenities include nursing rooms, adult changing areas, and child-sized facilities. Rest areas with varied seating options positioned along nature walks.



# 7 SCIENCE PARK DRIVE GENEO



*"7 Science Park Drive proves that **universal design and modern hospitality do not need to be separate ideas**, but they can be harmoniously designed together to empower and delight users."*  
— Surbana Jurong Consultants

**DEVELOPER** CapitaLand Development  
**ARCHITECT** Surbana Jurong Consultants Pte Ltd

## PROJECT DETAILS

Singapore Science Park's first mixed-use development harmoniously integrates a 28,800 sqm business park with Citadines Science Park Singapore's 250-unit serviced residence, creating an environment where Universal Design bridges workplace and hospitality needs.

## KEY UD FEATURES

- **Integrated Accessibility Network:** Fully sheltered linkways connect seamlessly to Kent Ridge MRT station and bus stops. All lifts are wheelchair accessible and come with visual beacons and auditory signals. Wide corridors with acoustic treatments, colour-coded car parks with safe pedestrian pathways and end-of-trip facilities include accessible showers and changing areas.
- **Inclusive Room Design:** Hotel and office lobbies are equipped with hearing enhancement systems. The check-in counters are designed at accessible-height. Extra-large washrooms provide generous maneuvering space, while comfortable waiting areas offer varied seating heights. Interactive digital directory includes wheelchair-accessible routing.
- **Accessible Common Facilities:** Hotel and office lobbies are equipped with hearing enhancement systems. The check-in counter at Level 10 is designed at accessible-height. Extra-large washrooms provide generous maneuvering space, while comfortable waiting areas offer varied seating heights. Interactive digital directory includes wheelchair-accessible routing.
- **Family-Centric Amenities:** Nursing rooms located at Level 1 (business park) and Level 10 (hotel) to support nursing mothers. Child-friendly facilities include diaper changing stations, with family parking lots near lift lobbies.

Organiser



An Initiative Under

